

GAINWELL
CONCIERGE

CURATED EXCLUSIVELY BY GAINWELL CONCIERGE

Phuket Private Estate Collection

21 — 27 NOVEMBER 2026

PRIVATE VILLAS · EXCEPTIONAL SERVICE · TAILORED EXPERIENCES

A PRIVATE PORTFOLIO · MMXXVI

AN INVITATION

A curated collection of Phuket's
finest private estates — selected with
the discretion and discernment
of Gainwell Concierge.

For a private gathering of sixteen guests across six luminous nights on the Andaman, our concierge has hand-selected three exceptional residences. Each estate has been vetted for absolute privacy, refined architecture, full-service staffing and proximity to the experiences that define Phuket at its most rarefied.

OPTION 1

RECOMMENDED BY GAINWELL

Our Recommended Private Estate

21 – 27 NOVEMBER 2026

6 NIGHTS · 7 BEDROOMS · 8 BATHROOMS · 16 GUESTS

OPTION I · 21 – 27 NOVEMBER 2026

Our Recommended Private Estate

7

BEDROOMS

8

BATHROOMS

16

GUESTS

6

NIGHTS

OVERVIEW

An intimate, design-forward sanctuary on Phuket's most coveted west coast. The estate's three-level architecture, full-service staffing and uninterrupted Andaman views deliver an Aman-calibre stay for a discerning group of sixteen.

ESTATE HIGHLIGHTS

- Oceanfront hillside estate across three architectural levels
- Wrap-around decks opening to the Andaman Sea
- Infinity-edge pool merging with the horizon
- Private hot tub for sunset evenings
- Resident estate chef preparing personalised menus
- Daily housekeeping with evening turndown service

POOL

Infinity-edge pool dissolving into the Andaman, private hot tub

RESIDENT STAFF

Three resident staff, private chef, guest experience team

BREAKFAST

Complimentary à la carte breakfast prepared daily

TRANSFERS

One return airport transfer · daily Kamala/Patong shuttle

VIEWS

Andaman Sea, Kamala Bay, hillside sunsets

LOCATION

Kamala Headland · West Coast Phuket

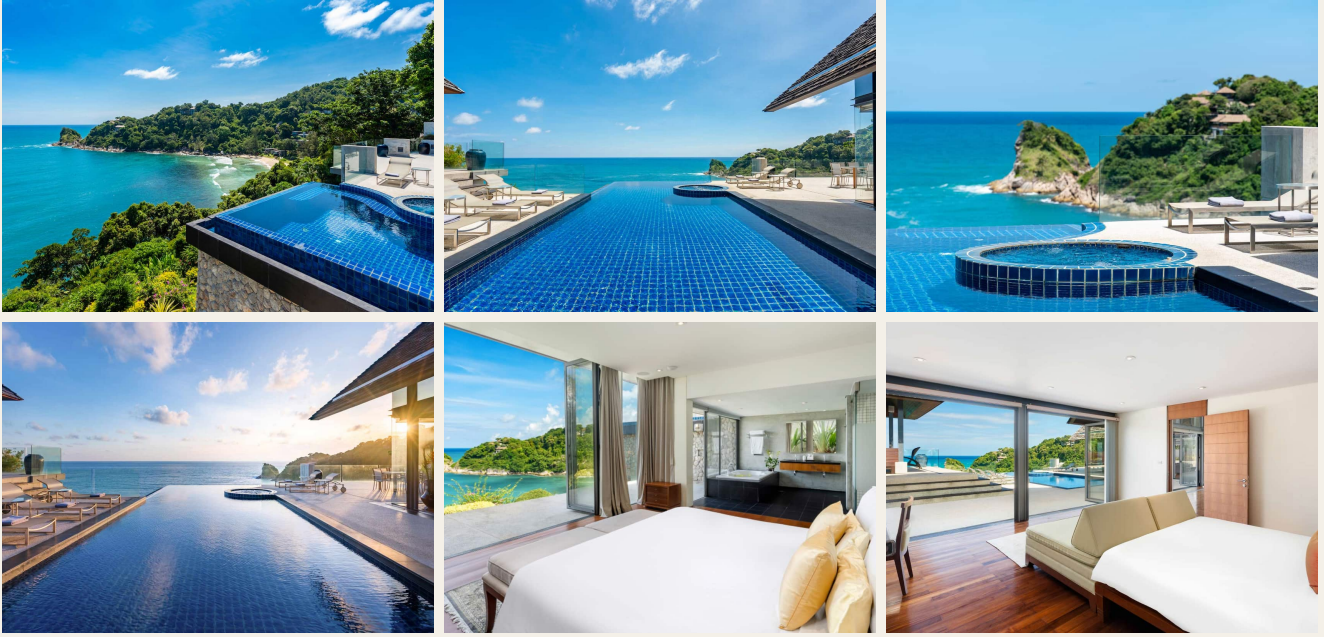
HOUSEKEEPING

Daily housekeeping with evening turndown

TRAVEL DATES

21 – 27 November 2026 · 6 Nights

OPTION 1 · GALLERY



OPTION 1 · GALLERY



OPTION II

Alternative Luxury Estate

23 – 27 NOVEMBER 2026

4 NIGHTS · 13 BEDROOMS · 14.5 BATHROOMS · 16 GUESTS

OPTION II · 23 – 27 NOVEMBER 2026

Alternative Luxury Estate

13

BEDROOMS

14.5

BATHROOMS

16

GUESTS

4

NIGHTS

OVERVIEW

A landmark Thai-modern estate at the end of a private cul-de-sac — vast in scale yet intimately staffed. With thirteen ensuite bedrooms it accommodates sixteen in extraordinary comfort, with room for staff entourage or extended family.

ESTATE HIGHLIGHTS

- Newly renovated 2,500 sqm Thai-modern estate, four floors
- 17 x 6 metre private infinity pool with hot tub
- 100 m² rooftop terrace for sunset cocktails
- Resort-scale living, dining and entertainment areas
- Fully equipped private fitness suite
- Secluded dead-end address with cliff-top privacy

POOL

17 x 6m infinity pool with hot tub, pool toys

VIEWS

Cliff-side vistas of Patong Bay & the Andaman

RESIDENT STAFF

In-house chef, villa manager, housekeeping brigade

LOCATION

Patong Hillside · Phuket

BREAKFAST

Complimentary daily · lunch & dinner on request

HOUSEKEEPING

Daily housekeeping across all four floors

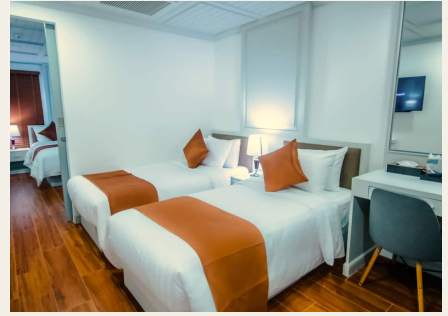
ENTERTAINMENT

85-inch cinema lounge, private gym, rooftop terrace

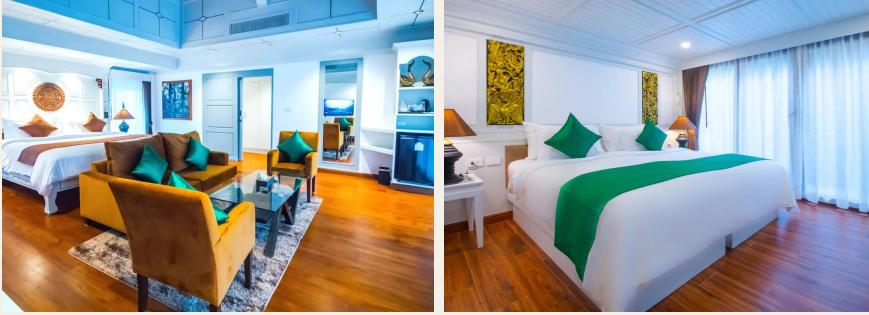
TRAVEL DATES

23 – 27 November 2026 · 4 Nights

OPTION II · GALLERY



OPTION II · GALLERY



OPTION III · 23–29 NOVEMBER 2026

Extended Stay Private Estate

The same exceptional Patong hillside estate as Option II, extended into a leisurely six-night residency. The additional nights permit a more unhurried rhythm — late mornings, two full yacht days, an evening at Baba Nest and a second tasting at the resident chef's table without compromise.

- Two additional nights for deeper repose
- Room for a private sunset cruise & full-day Phi Phi charter
- Spa, golf and Michelin evenings at an unhurried pace
- Materially improved per-night value across the full estate



A COMPARATIVE VIEW

Estate Comparison

	RECOMMENDED Option I	Option II	Option III
TRAVEL DATES	21 – 27 Nov 2026	23 – 27 Nov 2026	23 – 29 Nov 2026
NIGHTS	6	4	6
BEDROOMS	7	13	13
BATHROOMS	8	14.5	14.5
GUEST CAPACITY	16	16	16
POOL	Infinity oceanfront	17x6m + hot tub	17x6m + hot tub
VIEWS	Andaman sunsets	Patong Bay cliff-top	Patong Bay cliff-top
HOUSEKEEPING	Daily + turndown	Daily	Daily
BREAKFAST	Included daily	Included daily	Included daily
RESIDENT CHEF	Yes	Yes	Yes
ENTERTAINMENT	Cinema, decks	Cinema, gym, rooftop	Cinema, gym, rooftop
IDEAL FOR	Design-led retreat	Resort-scale celebration	Unhurried residency

THE PARTICULARS

Estate Investment

Estate investment for each residence is curated to include the full complement of staffing, daily breakfast and the privileges detailed herein. Final figures are tendered privately upon expression of interest and held against availability.

6 NIGHTS			TOTAL INVESTMENT
Option I · Recommended	21 – 27 Nov 2026		On Application
4 NIGHTS			TOTAL INVESTMENT
Option II · Alternative	23 – 27 Nov 2026		On Application
6 NIGHTS			TOTAL INVESTMENT
Option III · Extended Stay	23 – 29 Nov 2026		On Application

INCLUDED SERVICES

Resident staff, private chef, daily breakfast, housekeeping & 24-hour concierge support.

SECURITY DEPOSIT

A refundable deposit may be held against the residency, returned in full upon departure.

PER GUEST · INDICATIVE

Per-night and per-guest investment furnished in the private financial appendix.

Rates remain subject to availability and confirmation at the time of booking.

BESPOKE BY GAINWELL

Concierge Enhancements

01 VIP Airport Meet & Assist

03 Private Chauffeurs

05 Private Chef Experiences

07 Beach Club Access

09 Golf Experiences

11 Island Excursions

02 Luxury Chauffeured Transfers

04 Private Yacht Charters

06 Restaurant Reservations

08 Spa Experiences

10 Nightlife Concierge

12 24-Hour Concierge Support

THE ISLAND, PRIVATELY

Phuket Experiences

CURATED

Private Phi Phi Yacht Charter

A full day on the Andaman aboard a privately chartered motor yacht.

CURATED

James Bond Island

The cinematic monolith of Ko Tapu, reached by private long-tail.

CURATED

Catch Beach Club

Sunset table service on Surin Beach, Phuket's most fashionable address.

CURATED

Luxury Spa Experiences

In-villa and resort-spa journeys at Amanpuri, Trisara and Six Senses.

CURATED

Championship Golf

Tee times at Blue Canyon, Laguna and Red Mountain with caddie & transfers.

CURATED

Phang Nga Bay Cruise

Limestone karsts, hidden lagoons and a private floating lunch.

CURATED

Café del Mar Phuket

Reserved daybeds and bottle service at the island's iconic beach club.

CURATED

Baba Nest Sunset

Phuket's most coveted sunset reservation, secured exclusively.

CURATED

Michelin Dining

Private bookings at PRU, Suay and other distinguished tables.

THE GAINWELL STANDARD

Why Gainwell Concierge

Luxury Travel Expertise Private Villa Specialists Tailor-Made Experiences

24-Hour Concierge Support Global Luxury Network Personalised Service

THE FINAL WORD

Your Private Phuket Retreat Awaits

*Luxury is not simply where you stay.
It is the privacy, the service and the experiences
that surround you.*

PRESENTED BY

GAINWELL
CONCIERGE

PRIVATE VILLAS · LUXURY TRAVEL · BESPOKE EXPERIENCES